

**Shri Ramdeobaba College of Engineering and Management
Nagpur – 440013**

**An Autonomous Institute Affiliated to Rashtrasant Tukadoji Maharaj Nagpur
University, Nagpur**

NAAC Accredited with 'A' Grade

www.rknec.edu

INTERNAL QUALITY ASSURANCE CELL (IQAC)

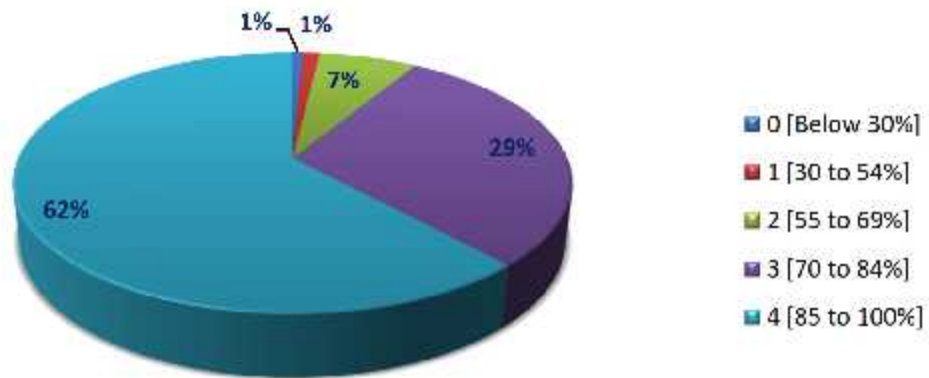
**STUDENT SATISFACTION
SURVEY**

(ASSESSMENT OF TEACHING LEARNING PROCESS)

ANALYSIS

[2019-20]

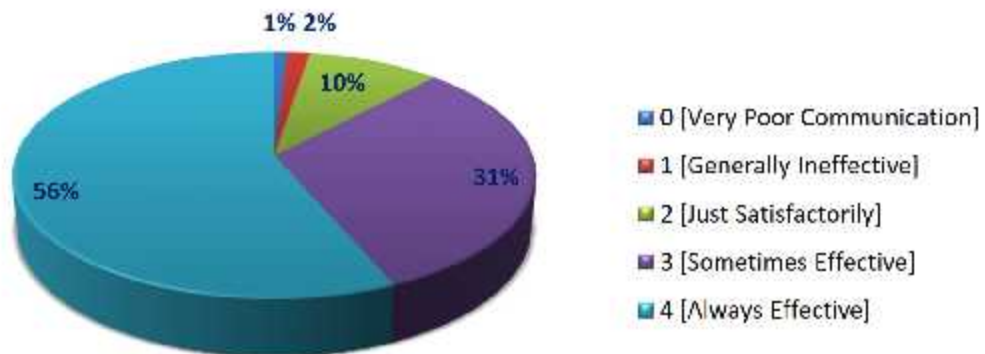
Q1: Degree of Syllabus Coverage in the Class



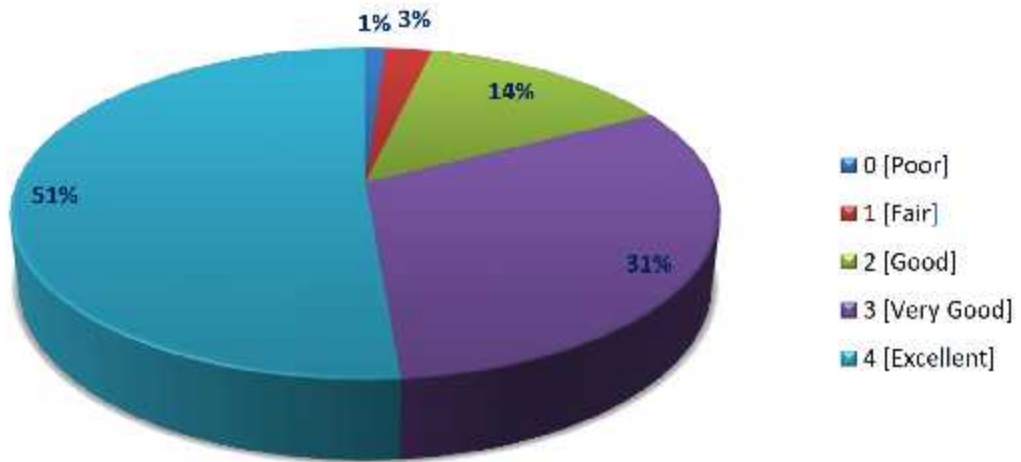
Q2: Teacher's Preparedness for Delivery of Courses in the Classes



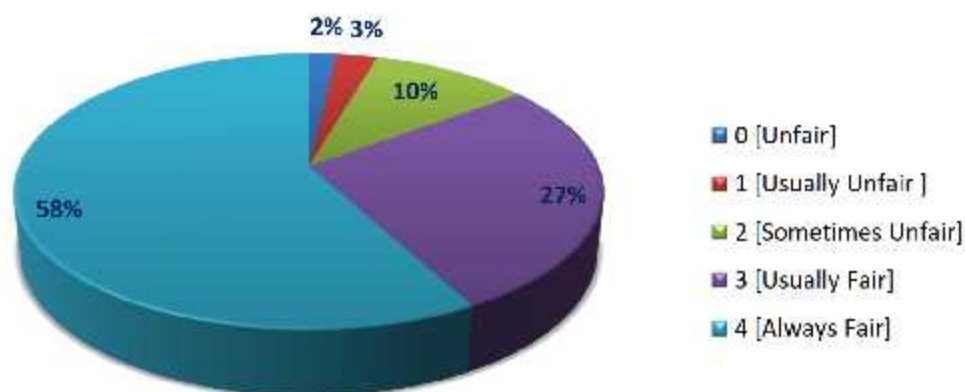
Q3: Communication Skill of Teachers



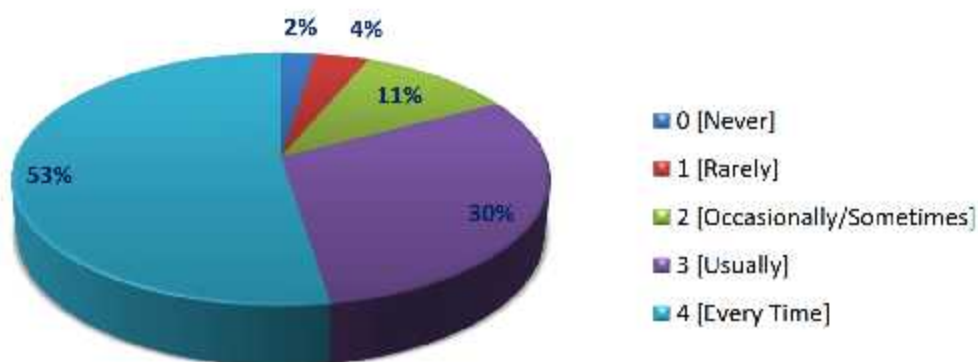
Q4: Teachers Approach for Teaching the Courses



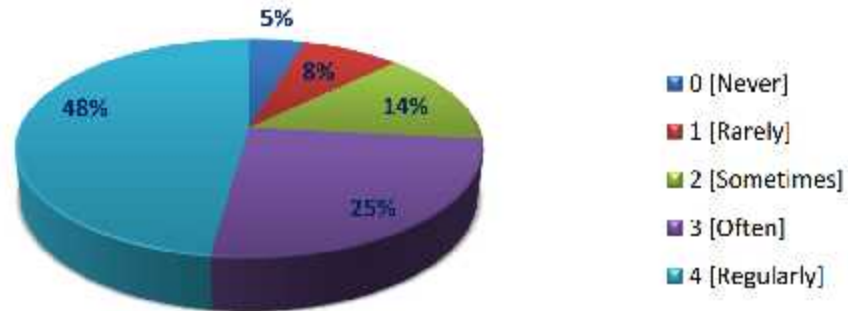
Q5: Unbiased Approach in Evaluation Process



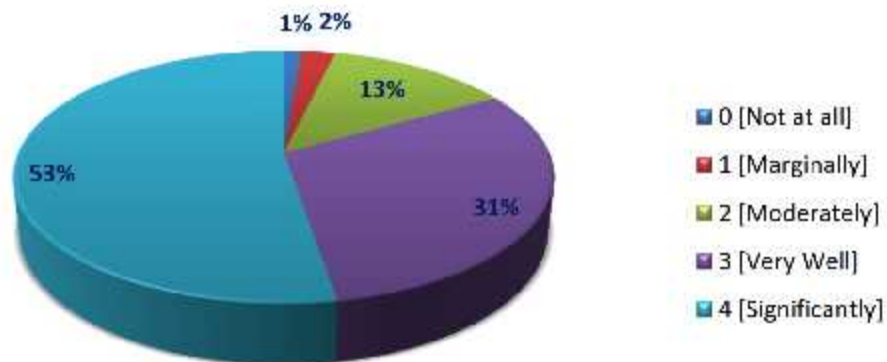
Q6: Performance in the Assignments given were Discussed with the Students



Q7: Opportunities provided for Internship, Student Exchange, Field Visit for students



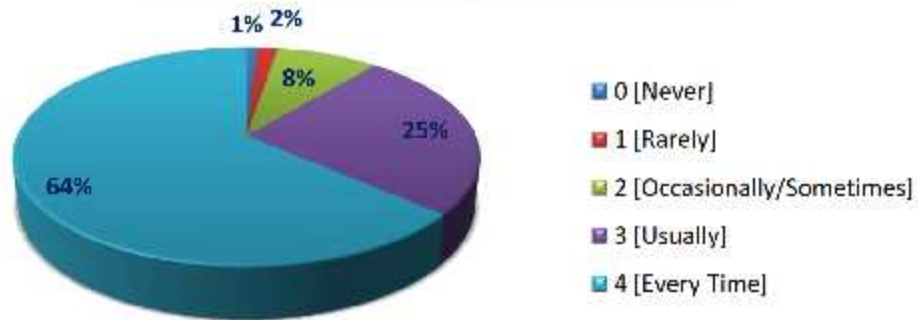
Q8: Effectiveness of Teaching and Mentoring Process



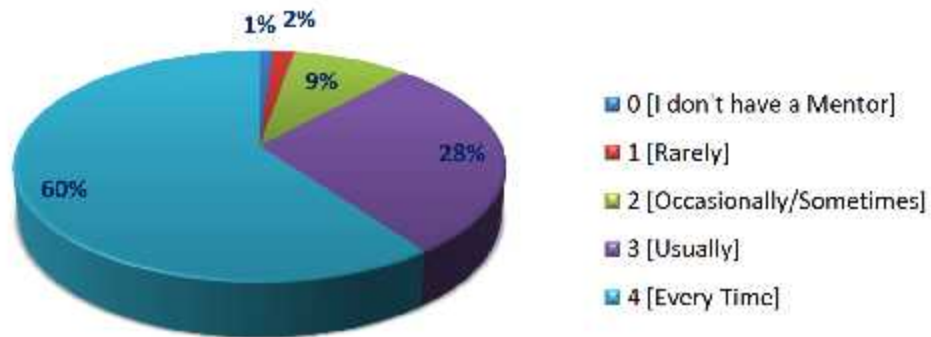
Q9: Multiple Opportunities Provided to Learn and Grow



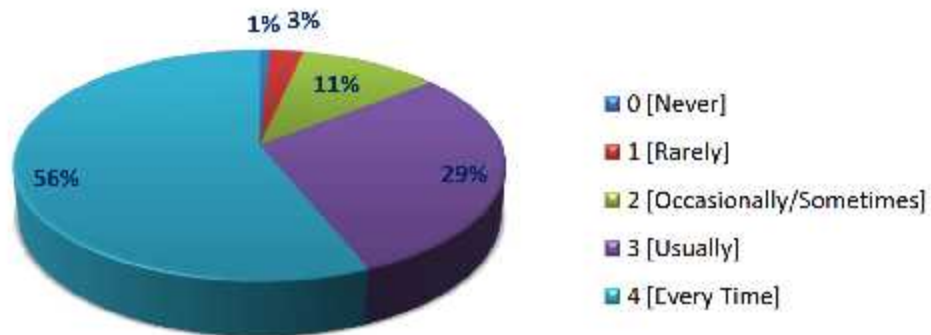
Q10: Are the Course Outcomes, Programme Outcomes and Required Skill sets discussed



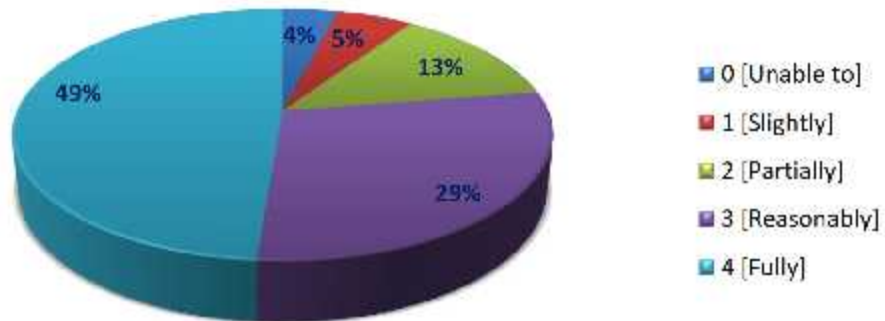
Q11: Necessary Follow-up of the Assigned Tasks is done



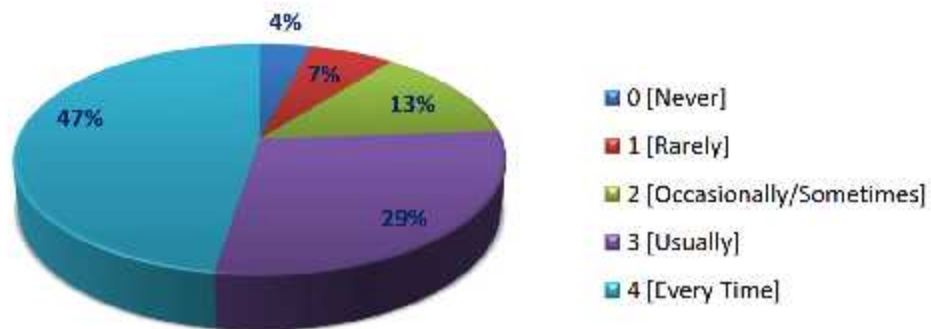
Q12: Are the Concepts Explained with suitable Examples and Applications



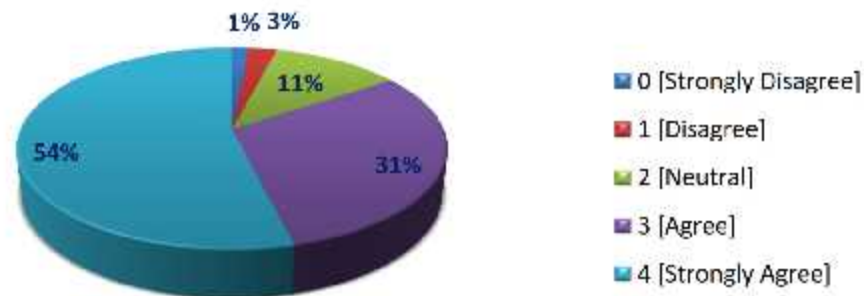
Q13: Are your Strengths Identified and Encouraged



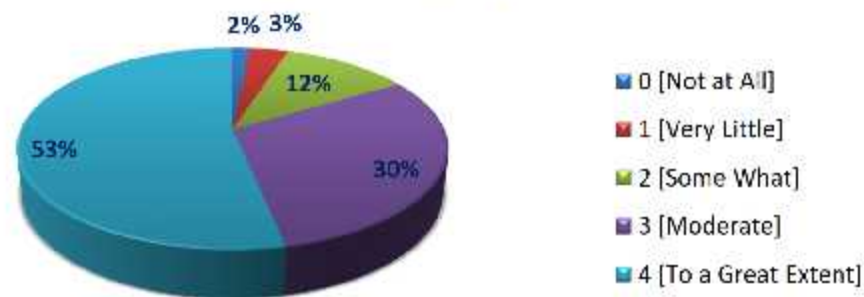
Q14: Are your Weaknesses Identified and help Extended to Overcome them



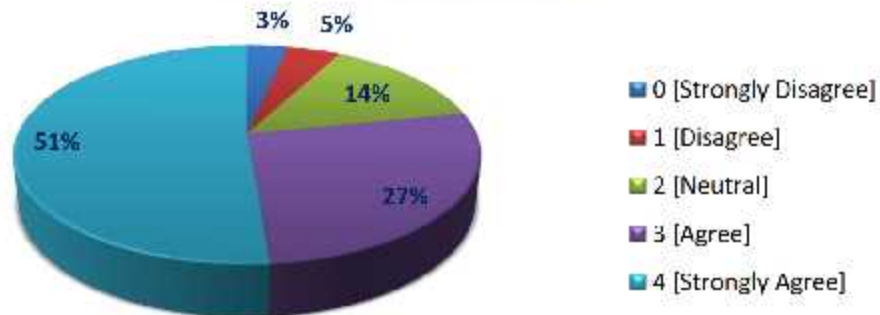
Q15: Degree of your Involvement in the Monitoring, Review and continuous Quality Improvement of the Teaching Learning process of the Institute



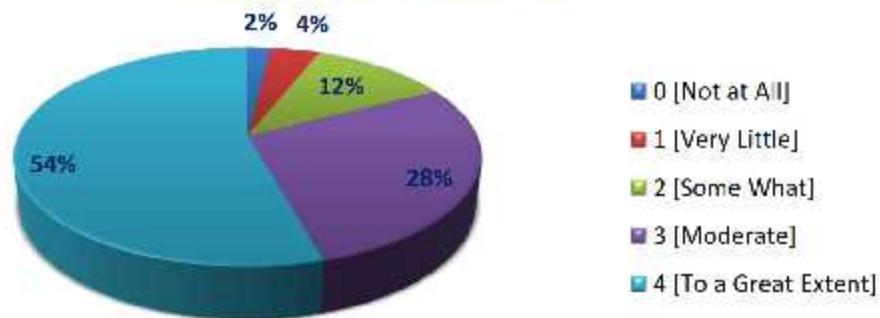
Q16: Usage of Student Centric Methods such as Experimental Learning, Participative Learning and Problem Solving Methodologies for Enhancing Learning Experience



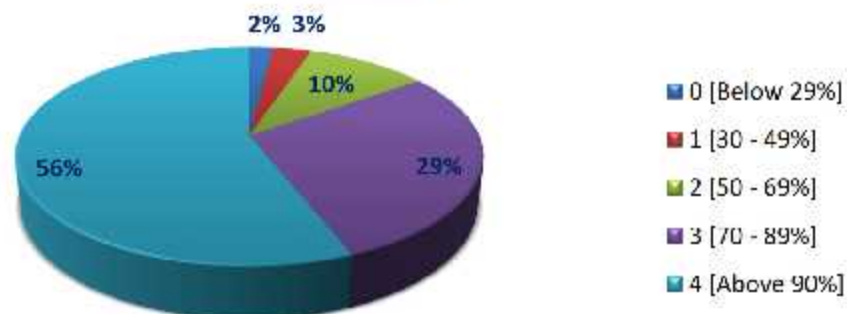
Q17: Encouragement for Participation in Curricular, Co-Curricular and Extra-Curricular Activities



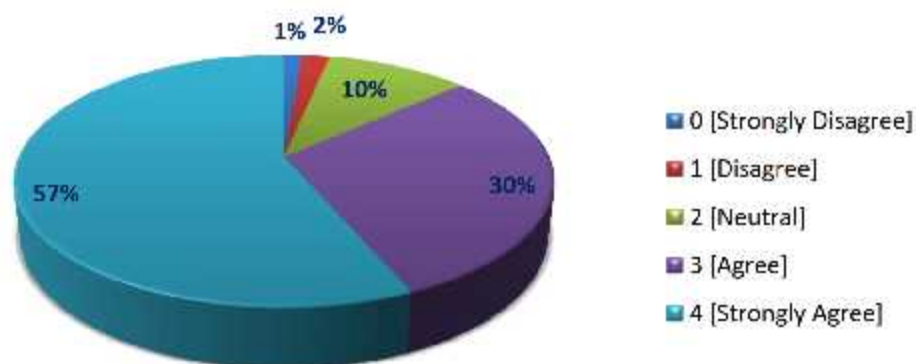
Q18: Efforts to Inculcate Employability, Life skills, Soft skills and Value based learning



Q19: Degree of usage of ICT tools such as LCD projector, Multimedia etc. while Teaching



Q20: The overall Quality of Teaching-Learning Process in your Institute



Dr. (Mrs.) Meghana A. Hasamnis
Member Secretary, IQAC